



## Glenveagh Nature Education Programme

### Module Fact Sheet for Teachers:

## Geography River Studies

### Book this module if:

You are studying River Processes as part of the Junior Certificate Geography programme.  
You require a practical exploration of the effect of rivers on the landscape.  
You require practical mapping exercises in the field for students.

### Learning Outcomes: what we hope the students in your class will gain from the module:

1. Hands on experience of many elements of the river studies section of geography.
2. An opportunity to see and have explained the definitions of; Erosion, Deposition, Load, and features such as Watershed, Meandering, Waterfalls, etc in a tactile, real-life way.
3. A greater understanding of the links between river erosion and its immediate effect on the surrounding landscape.
4. A greater understanding of map work, grid references, compass work etc.
5. Completing a workbook with a variety of curriculum linked exercises, taking the classroom learning into the outdoors.

### Methods of teaching and activities: what students will experience:

1. Presentation and discussion of day's objectives, terminology, equipment and methodology.
2. A 7 kilometre walk beside a river with hands on exploration of the three courses, upper, middle and lower.
3. The opportunity to investigate the influence of rivers on the landscape through experiments such as velocity tests, load recording, and identifying erosion features.
4. Practical map work in the field, such as obtaining grid references and working out heights through contour recognition.
5. Step by step processes recorded in a worksheet that can be used for further studies in the classroom.

## Suggested preparation activities to do in school:

- Cover the chapters on Geography and Ordnance Survey maps.
- Familiarisation of terminology such as 'confluence', 'tributary', 'watershed' etc. and the three stages of a river.
- Practice grid references, contour identification, curved distance measuring and symbols on Ordnance Survey maps.

## Suggested follow up activities to do after your visit:

- The workbook will contain a map, exploration exercises of the three stages of a river and map work answers. These could be used for a variety of follow up projects.
- A research project on the Glenveagh valley and surrounding Derryveagh mountains could be undertaken after the day.
- Graphs can be created using the data gathered at the three river stages.
- There is large scope for a conclusion essay taking in a variety of different aspects of the river and map study.

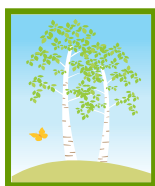
## Useful references for further information:

['http://www.npws.ie/mapsanddata/'](http://www.npws.ie/mapsanddata/) A very useful website with a variety of different mapping programmes for around the country.

['http://osi.ie/Home.aspx'](http://osi.ie/Home.aspx) The Ordnance Survey Ireland website with nationwide OS maps.

'Reading The Irish Landscape' by Mitchell & Ryan, Town House, ISBN 1860590551.

Ask us for the Green Glenveagh Guide Book - we can send you a copy.



Nature Education Programme  
Glenveagh National Park, Churchill, Donegal  
Tel: 00353 (0) 761 002691/3 E-mail: [glenveagh-education@ahg.gov.ie](mailto:glenveagh-education@ahg.gov.ie)